



**APPLICATION**

The **AMSCO Automated Pass-Through Window** for Central Sterile Services Departments (CSSD) is an automated window that allows devices that cannot be processed in a washer/disinfector to be passed from decontamination side to clean side of the CSSD (or vice-versa, if a device was not correctly re-processed) prior to being prepared for sterilization.

The **AMSCO Automated Pass-Through Window** for Endoscopy (ENDO) is an automated window that facilitates unidirectional flow of devices from decontamination to reprocessing or from reprocessing to storage in an endoscopy area.



**DESCRIPTION**

The AMSCO Automated Pass-Through Window is an inline vertical lift window with a single operable (movable) panel and a single non-operable (fixed) panel, an integral continuous stainless steel shelf with a microwave no-touch sensor plate for opening and closing. All windows are fully assembled and ready to install.

**STANDARD FEATURES**

**The AMSCO Automated Pass Through Window** is constructed from anodized aluminum extrusions, close-tolerance moving parts and tempered glass. All frames have a clear anodized aluminum finish, fastened with screws, joints are sealed and 1/4" (6.4mm) clear tempered

glass is dry glazed. All moving panels are guided using industry proven dual rope and counterbalance system.

**The Shelf** has been developed specifically for the needs of this window. The shelf extends 25" (635mm) on either side of the window (CSSD Models) or 4" (102mm) on the decontamination side and 25" (635mm) on the clean side of the window (ENDO Models). The continuous shelf provides a smooth surface through the window. The shelf is secured by two stainless steel brackets under the shelf on each side of the window (total of four brackets).

**The Window** features automated opening and closing activated by a microwave, no-touch, sensor plate

located on each side of the window at the edge of the shelf. Operation of the motorized window ensures that opening and closing of the window is hands-free.

**STANDARDS**

**The AMSCO Pass-Through Window meets the applicable requirements of the following standards:**

- Underwriters Laboratories (UL) Standard 73.
- Canadian Standards Association (CSA) CAN/CSA-22.2 No. 68.

**The Selections Checked Below Apply To This Equipment**

**CSSD MODELS\***

- (PTWAMDR1100)  
Window Width = 28" (711mm)/Height = 45" (1143mm), 120V  
Shelf extends 25" on either side of window
- (PTWAMDR2100)  
Window Width = 34" (864mm)/Height = 45" (1143mm), 120V  
Shelf extends 25" on either side of window
- (PTWAMDR3100)  
Window Width = 40" (1016mm)/Height = 45" (1143mm), 120V  
Shelf extends 25" on either side of window

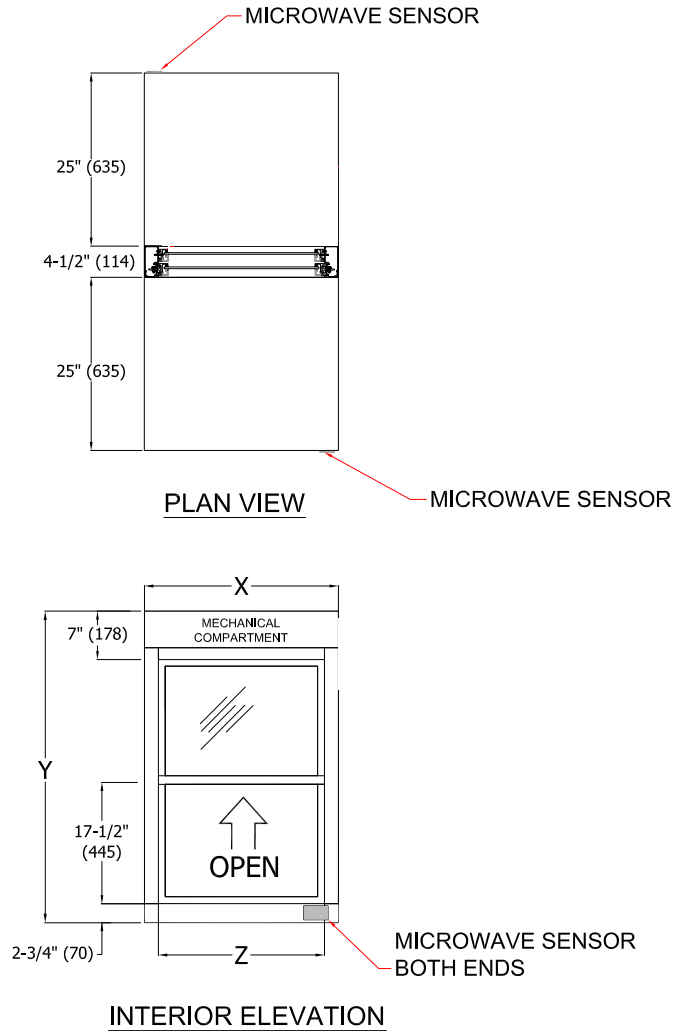
**ENDO MODELS\***

- (PTWAENDO1100)  
Window Width = 28" (711mm)/Height = 45" (1143mm), 120V  
Shelf extends 25" on one side of window and 4" on other side.
- (PTWAENDO2100)  
Window Width = 34" (864mm)/Height = 45" (1143mm), 120V  
Shelf extends 25" on one side of window and 4" on other side.
- (PTWAENDO3100)  
Window Width = 40" (1016mm)/Height = 45" (1143mm), 120V  
Shelf extends 25" on one side of the window and 4" on other side.

Item \_\_\_\_\_

Location(s) \_\_\_\_\_

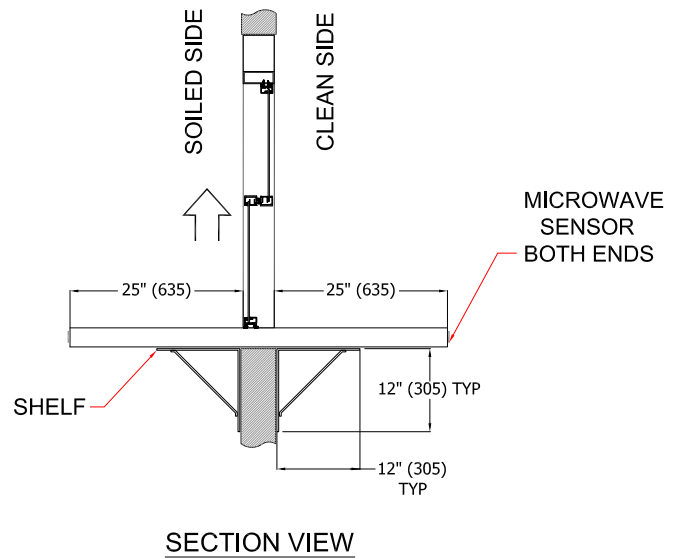
# MDR/CSSD Models



## SPECIFICATIONS

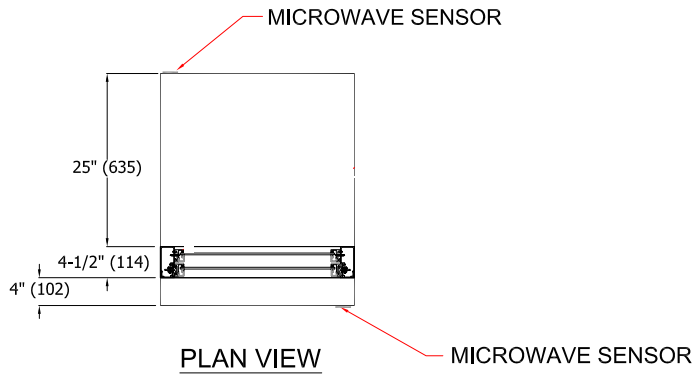
- FRAME: 6063 T5 TEMPER CUSTOM ALUMINUM EXTRUSIONS
- FINISH: CLASS II CLEAR ANODIZED ALUMINUM
- GLASS: 1/4" (6.4) CLEAR TEMPERED GLASS
- AUTOMATIC OPEN / CLOSE
- DUAL MICROWAVE SENSOR ACTUATION FROM INTERIOR AND EXTERIOR SIDE
- 304 STAINLESS STEEL SHELF, BRUSHED FINISH

DIMENSIONS IN ( ) ARE METRIC, MILLIMETERS



FINISHED OPENINGS, SERVICE WIDTHS & WEIGHTS FOR MDR / CSSD WINDOWS					
UNIT	X FINISHED OPENING WIDTH	Y FINISHED OPENING HEIGHT	Z SERVICE WIDTH	SHIPPING WEIGHT (LBs, Kg)	OPERATING WEIGHT (LBs, Kg)
PTWAMDR1100	28-1/4" (718)	45-1/4" (1149)	24" (610)	315, 142	270, 122
PTWAMDR2100	34-1/4" (870)	45-1/4" (1149)	30" (762)	335, 151	280, 127
PTWAMDR3100	40-1/4" (1022)	45-1/4" (1149)	36" (914)	375, 170	300, 136

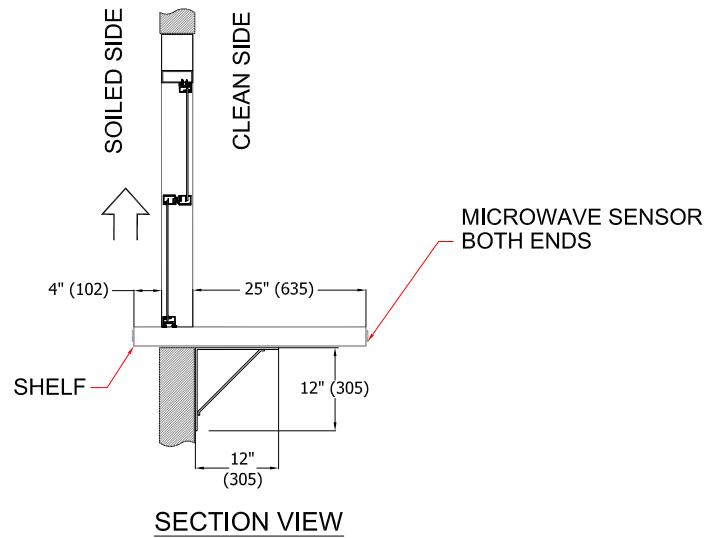
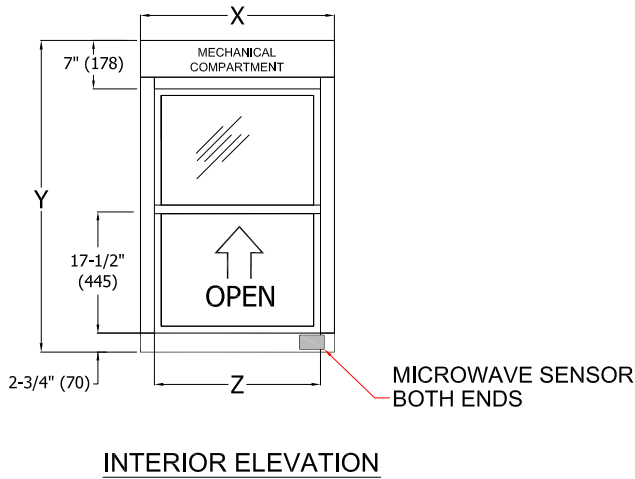
# ENDO Models



## SPECIFICATIONS

- FRAME: 6063 T5 TEMPER CUSTOM ALUMINUM EXTRUSIONS
- FINISH: CLASS II CLEAR ANODIZED ALUMINUM
- GLASS: 1/4" (6.4) CLEAR TEMPERED GLASS
- AUTOMATIC OPEN / CLOSE
- DUAL MICROWAVE SENSOR ACTUATION FROM INTERIOR AND EXTERIOR SIDE
- 304 STAINLESS STEEL SHELF, BRUSHED FINISH

DIMENSIONS IN ( ) ARE METRIC, MILLIMETERS



FINISHED OPENINGS, SERVICE WIDTHS, & WEIGHTS FOR ENDO WINDOWS					
UNIT	X FINISHED OPENING WIDTH	Y FINISHED OPENING HEIGHT	Z SERVICE WIDTH	SHIPPING WEIGHT (LBs, Kg)	OPERATING WEIGHT (LBs, Kg)
PTWAENDO1100	28-1/4" (718)	45-1/4" (1149)	24" (610)	280, 127	250, 113
PTWAENDO2100	34-1/4" (870)	45-1/4" (1149)	30" (762)	300, 136	260, 118
PTWAENDO3100	40-1/4" (1022)	45-1/4" (1149)	36" (914)	350, 159	275, 125

---

**For Further Information, contact:**

STERIS®



STERIS Corporation  
5960 Heisley Road  
Mentor, OH 44060-1834 • USA  
440-354-2600 • 800-548-4873  
[www.steris.com](http://www.steris.com)