

# VERIFY™ V24 AND V24I SELF CONTAINED BIOLOGICAL INDICATOR\*

## Preparation and Placement

- 1** Inspect biological indicator cap. Cap must freely turn.

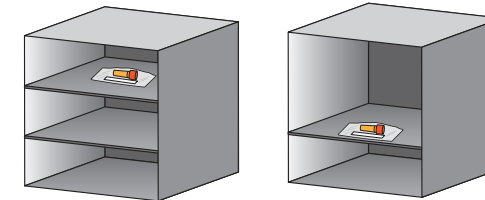


- 2** Place one (1) biological indicator (BI) in the pouch with one (1) chemical indicator (CI). Seal the pouch.

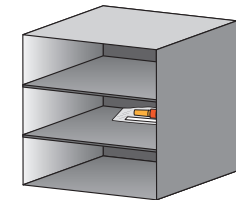


Use pouches and CIs that have been cleared for use in the sterilizer being tested.

- 3** V-PRO® Systems:  
a) **Two Shelves:** Place pouch at the center of the top shelf.  
b) **One Shelf:** Place pouch at bottom shelf front door.



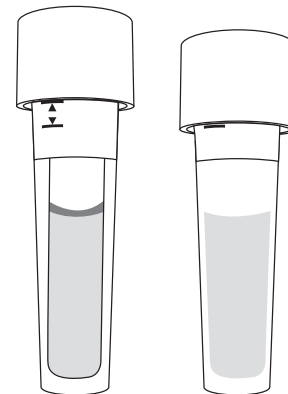
STERRAD® Systems:  
Place pouch at the back of the bottom shelf.



## Activation and Incubation

- 1** Remove CI and interpret results per the CI instructions for use.

- 2** Seal and crush the media ampoule using the HP Activator.

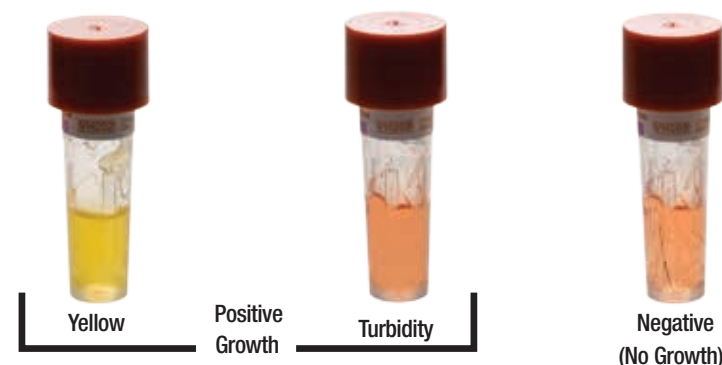


- 3** Incubate 24 hours at 55-60°C.



## Interpretation

- 1** At 24 hours incubation up to seven days, interpret BI results.



\* VERIFY V24I Self Contained Biological Indicator is not available in the United States.